



BJRC Around Osea Island Race for
Bart's Bash 2021:
Sailing Instructions

0300 124 0449 www.andrewsimpsonfoundation.org

Weymouth & Portland National Sailing Academy, Osprey Quay, Portland, Dorset DT5 1SA



Bart's Bash 2021: SAILING INSTRUCTIONS

1. RULES

- a. The regatta will be governed by the Sailing Instructions and the Rules as defined in The Racing Rules of Sailing
- b. Racing Rules may be changed by the Host Clubs and those amendments detailed in the Supplementary Sailing Instructions.
- c. Local rules and/or bye-laws of Host Clubs may apply. These will be detailed in the Supplementary Sailing Instructions for each Host Club.
- d. If there is a conflict between languages the English text will take precedence. If there is any inconsistency between this Notice of Race and the Supplementary Sailing Instructions, this Notice of Race and the Andrew Simpson Foundation (ASF) Sailing Instructions will prevail.
- e. Except in an emergency, a boat shall neither make radio transmissions while racing nor receive radio communications not available to all boats. This restriction also applies to mobile phones or any similar device. [DP]

2. CHANGES TO SAILING INSTRUCTIONS

- a. Any change to the Sailing Instructions will be communicated to each Individual Clubs designated Barts Race organiser in a timely manner before the start of the race. For Blackwater SC it's Steve Perkins; For Stone SC it's Sean Colvin; For Harlow Blackwater SC it's David Islin; For Maylandsea Bay SC it's Simon Evance and for Marconi SC it's Lee Garton.

3. COMMUNICATION WITH COMPETITORS

- a. Notices to competitors will be communicated to each Individual Clubs designated Barts Race organiser.



4. CODE OF CONDUCT

- a. [DP] Competitors and support persons shall comply with reasonable requests from race officials

5. SIGNALS MADE ASHORE

- a. No signals will be made ashore during this race.

6. SCHEDULE OF RACE

Sunday 19 th September 2021	
Event	Description
Briefings:	May be held by each Individual Club and/or posted on the Official Noticeboard of each participating BJRC Club
Racing:	The first warning signal will be no earlier than 11:40am
Racing:	The race will have a time limit of two hours

- a. The schedule may be altered by the RO due to weather conditions or other causes.
- b. To alert boats that the race sequence will begin soon, an orange starting line flag will be displayed on the committee boat mast with one sound at least five minutes before the first warning signal.

7. CLASS FLAGS

- a. The Class flag will be Numeral Pennant 1 

8. THE RACING AREA

- a. The racing area will be the area around Osea Island.
- b. Race marks will be predominantly channel markers with one inflatable orange mark on the north side (west of the Causeway) of Osea Island.

9. THE COURSE

- a. The course will be comprised of a single circumnavigation of Osea Island; the direction of which will be determined by the RO on the day but is expected to be clockwise starting from the Committee Boat Moored near Osea Pier and leaving Osea to Starboard and then onto:
Mark 1: Red Channel Marker No. 2 to starboard.
Mark 2: Orange Inflatable Mark to west of Osea Causeway to starboard




Mark 3: Green Channel Marker No. 1 at the east end of Osea spit – to starboard.

Mark 4: Red Channel Marker 'Marconi Buoy' off Marconi SC – to starboard.

Finish between the Committee Boat and Pin end Mark.

- b. The Committee Boat will be a Hunter Legend 336 Cruiser called White Spirit and will fly an orange flag whilst on station.
- c. See Appendix for course layout.

10. THE START

- a. Races will be started by using RRS 26 with the warning signal made five minutes before the starting signal.
- b. The Start Line will be between the Committee Boat Mast and the Pin end Marker Buoy.
- c. An inner distance mark will be laid and all competitors must start between it and the Pin end Marker Buoy.
- d. Individual Recall will be conveyed by dipping the class flag accompanied by an additional sound signal. This changes RRS Rule 29.1.
- e. General Recall will be conveyed by displaying the First Substitute  accompanied by two sound signals.

11. THE FINISH

- a. The Finish Line will be between the Committee Boat and the Pin end Mark and will be shorter than the Start Line.

12. PENALTY SYSTEM

- a. For Catamaran entries only - RRS 44.1 is changed so that the Two-Turns Penalty is replaced by the One-Turn Penalty comprising of one tack and one gybe.

13. PROTESTS

- a. Protests and requests for redress will be managed by the individual Clubs which the craft(s) involved are racing from.

14. SCORING

- a. The Race will be scored based on average boat speed handicapped using each classes Portsmouth Number Rating.



- b. Given the variety of conditions by which the event is to be held on a worldwide basis, any handicap results merged in with the Barts Bash results may be inaccurate, and no responsibility is accepted by the Barts organisers in respect thereof.
- c. Results must be submitted to the Bart's Bash website by the Host Clubs within 1 week of the event, and any subsequent amendments to the uploaded results should be detailed in writing to bartsbash@andrewsimpsonfoundation.org within 14 days

15. RISK STATEMENT

Sailing is by its nature an unpredictable sport and therefore inherently involves an element of risk. By taking part in the event, each competitor agrees and acknowledges that:

- (a) They are aware of the inherent element of risk involved in the sport and accept responsibility for the exposure of themselves, their crew and their boat to such inherent risk while taking part in the event.
- (b) They are responsible for the safety of themselves, their crew, their boat and other property whether afloat or ashore.
- (c) They accept responsibility for any injury, damage or loss caused by their own actions or omissions.
- (d) Their boat is in good order, equipped to sail in the event and they are fit to participate.
- (e) The provision of a race management team, patrol boats and other officials and volunteers by the event organiser does not relieve them of their own responsibilities.
- (f) The provision of patrol boat cover is limited to such assistance, particularly in extreme weather conditions, as can be practically provided in the circumstances.
- (g) It is their responsibility to familiarise themselves with any risks specific to this venue or this event drawn to their attention in any rules and information produced for the venue or event and to attend any competitors briefing held for the event.

16. INSURANCE

- a. Each craft is required to hold adequate insurance and in particular to hold insurance against third party claims in the sum of at least £2 million; this minimum may be amended as appropriate, in the Supplementary Sailing Instructions of each Individual Club.

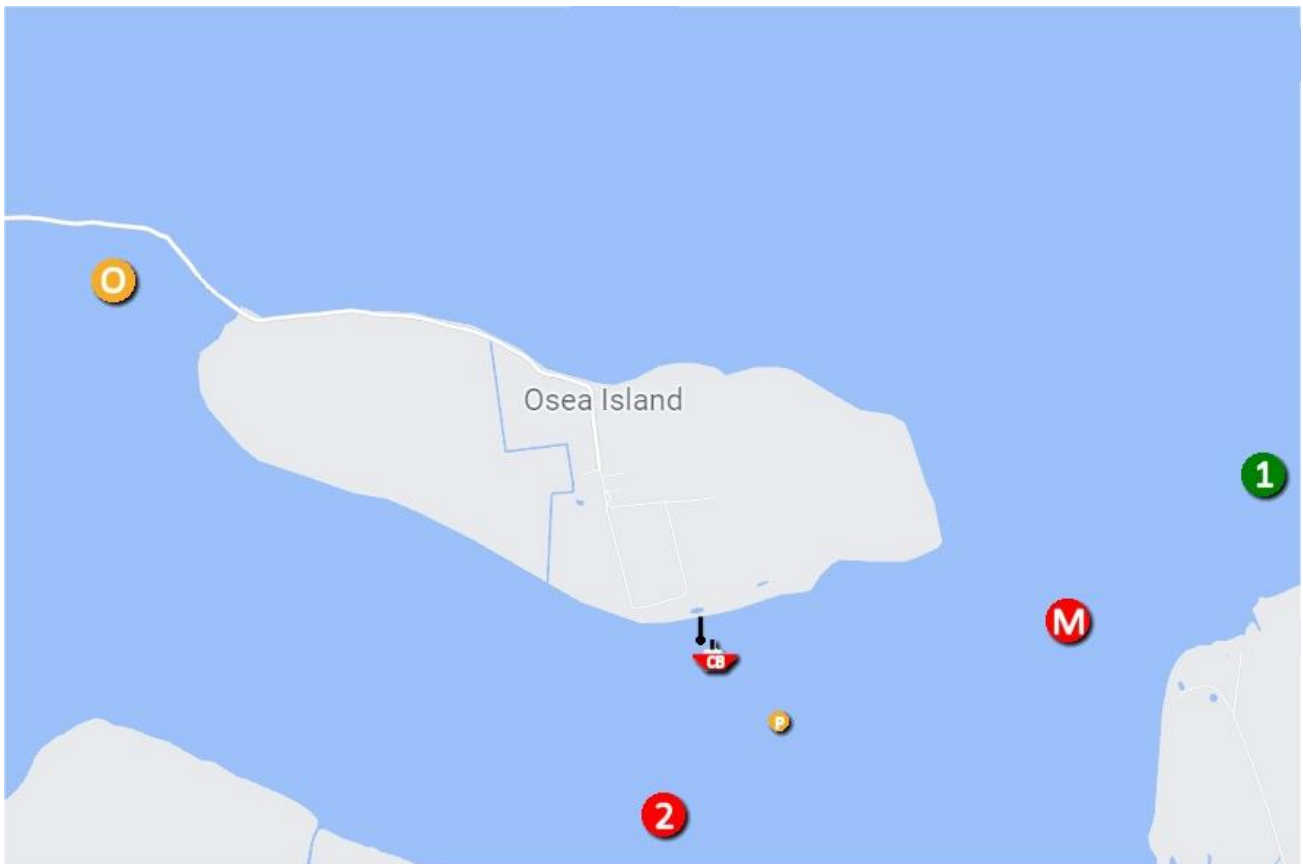


17. SUPPLEMENTARY INFORMATION

- a. All Clubs to use the Blackwater Sailing Secs WhatsApp group to communicate all non-safety related racing information.
- b. All Safety boats and race management to use VHF Channel M2/P4 for communications.
- c. Each Club is responsible for ensuring their fleets are escorted safely to and from the Race Area.
- d. Each Club needs to ensure all their participants sign up online via the Barts Bash Website using the BJRC venue and provide the RO team with a definitive list of participants from their Club before the start. The list needs to contain the Class type, Sail Number, PY, Helm and Crew for each entrant. The participant lists need to be sent to the race team via the Blackwater Sailing Secs WhatsApp Group in a timely manner before the race.
- e. It is important for each Club to remind their participants to notify a Safety Boat if they intend to retire and leave the Race Area so that they can be included correctly in the results and avoid unnecessarily sending Support boats to look for them.

18. APPENDIX


Most likely course if the wind is SW/S on race day. The RO will make the final decision on the day.





BART'S BASH!





Together we
transform lives
through sailing